



MODULE 1: SEAL

Student Engagement & Active Learning

MODULE 2: ELSP

Engaging Learners using Starters & Plenaries

MODULE 3: CCA

Conducting Collaborative Activities

MODULE 4: FAAL

Formative Assessment to Accelerate Learning



[CLICK TO REGISTER](#)



lte@tta.net.in

- 4 modules | 4 days
- 3.00pm - 5.00pm IST
- 30 min support sessions
- Small cohort size

Workshop Format

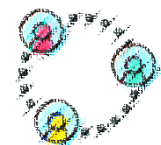


HANDS-ON
TASKS



DISCUSSIONS

GROUP
WORK



MODULE INFORMATION

Module 1	Module 2	Module 3	Module 4
SEAL - Student Engagement and Active Learning	ELSP - Engaging Learners using Starters and Plenaries	CCA - Conducting Collaborative Activities	FAAL - Formative Assessment to Accelerate Learning
Key Questions	Key Questions	Key Questions	Key Questions
What is student engagement and why does it matter?	What are starters and plenaries (S&P)?	What is collaborative learning (CL)?	What do you mean by Formative Assessment (FA)?
What are the factors affecting student engagement?	How do S&P improve student engagement?	What are the effects of CL on student engagement?	How is FA integral for student engagement?
What role does active learning play in student engagement?	Which interdisciplinary strategies can be used online?	What are the different CL strategies which can be employed effectively online?	What are some of the FA strategies which can be effectively employed online?
How to sustain whole class engagement/participation in a virtual lesson?	What to keep in mind while designing online S&P?	What to keep in mind while designing CL?	Which tech tools support FAAL online?
	Which free tech tools can be used for online S&P?	Which tech tools can be used to support CL?	

COURSE INFORMATION

- ❖ **Learn.Teach.Engage with TTA** is a professional development programme.
- ❖ It supports participants to improve student engagement in their virtual classrooms.
- ❖ It offers participants an opportunity to experience practical hands-on tasks which they can take back into their virtual classrooms.
- ❖ Well paced 2-hour sessions with 30 minutes extra for Q&A for each module.

- ❖ Goody Bags with strategies and online tools for each module.
- ❖ Completion certificates will be given to participants who successfully complete the LTE-Course Assignment.

Pricing: Rs. 1500/- plus taxes.
Register and pay online.

Note: A batch will run only subject to minimum batch sign-ups. The option to choose another batch will be available if the batch does not run.

BATCH 7
January 19th to 22nd 2021

BATCH 8
February 9th to 12th 2021

BATCH 9
February 23rd to 26th 2021

BATCH 10
March 2nd to 5th 2021